



# Italian Restaurant Business With Drive-Thru I-35 at 1808 E. Santa Fe St, Olathe, Kansas



## BUSINESS SALE PRICE: \$295,000

### DEMOGRAPHICS

	1 mile	3 miles	5 miles
Estimated Population	11,131	104,997	187,460
Avg. Household Income	\$74,936	\$103,469	\$120,477

- Rare opportunity to acquire a drive-thru location
- 2,400 square foot freestanding building
- Profitable, fully furnished, turnkey restaurant
- Local and loyal following with great reviews
- Easily converted to many concepts
- Great visibility with more than 40,000 vehicles per day along Santa Fe Street
- Below market rent

 [CLICK HERE TO VIEW MORE LISTING INFORMATION](#)

For More Information Contact: *Exclusive Agent*  
DARREN SIEGEL | 816.412.7377 | [dsiegel@blockandco.com](mailto:dsiegel@blockandco.com)



All information furnished regarding property for sale or lease is from sources deemed reliable, but no warranty or representation is made as to the accuracy thereof and the same is subject to errors, omissions, changes of prices, rental or other conditions, prior sale or lease or withdrawal without notice.

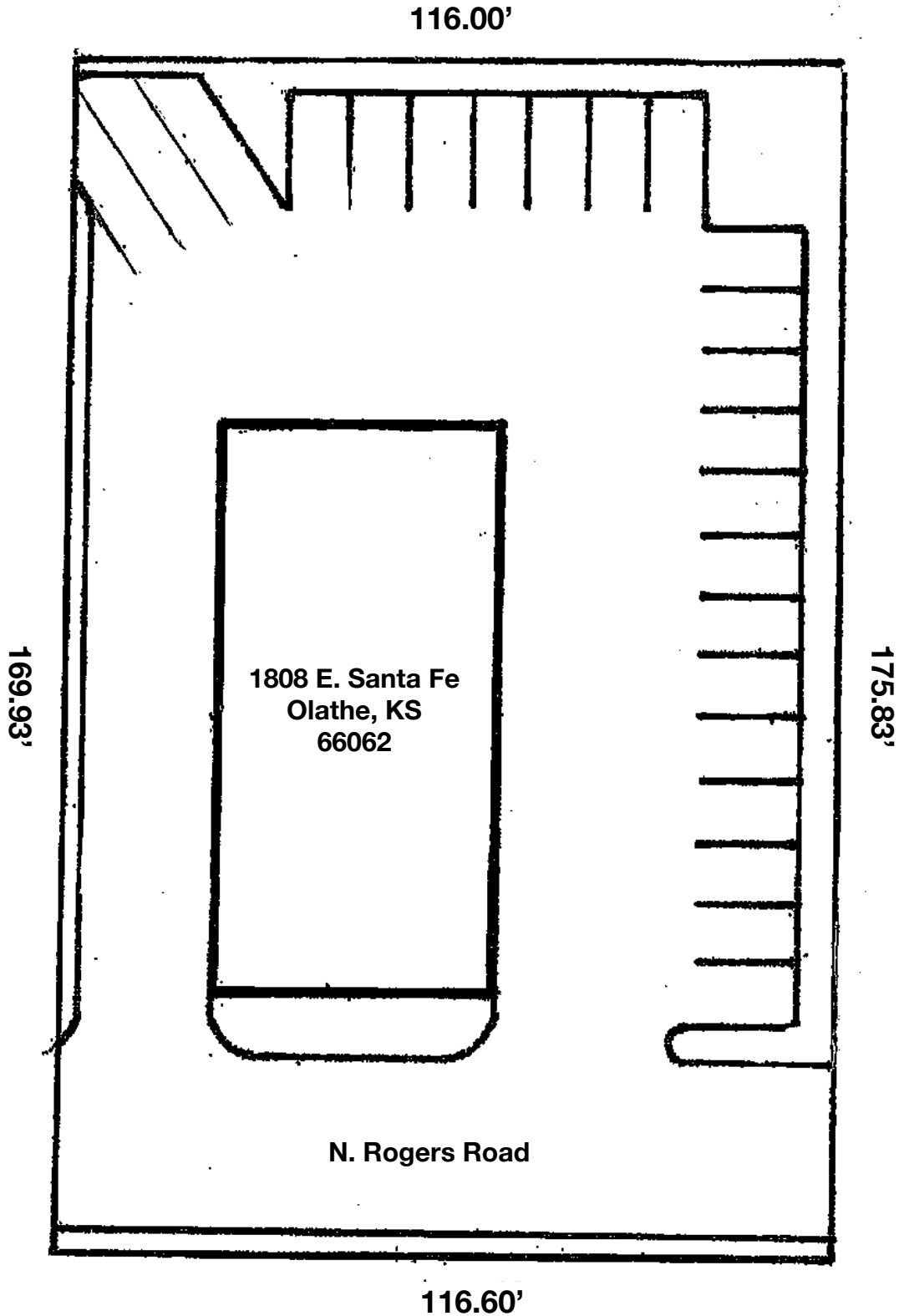
## PHOTOS



## PHOTOS



**SITE PLAN**

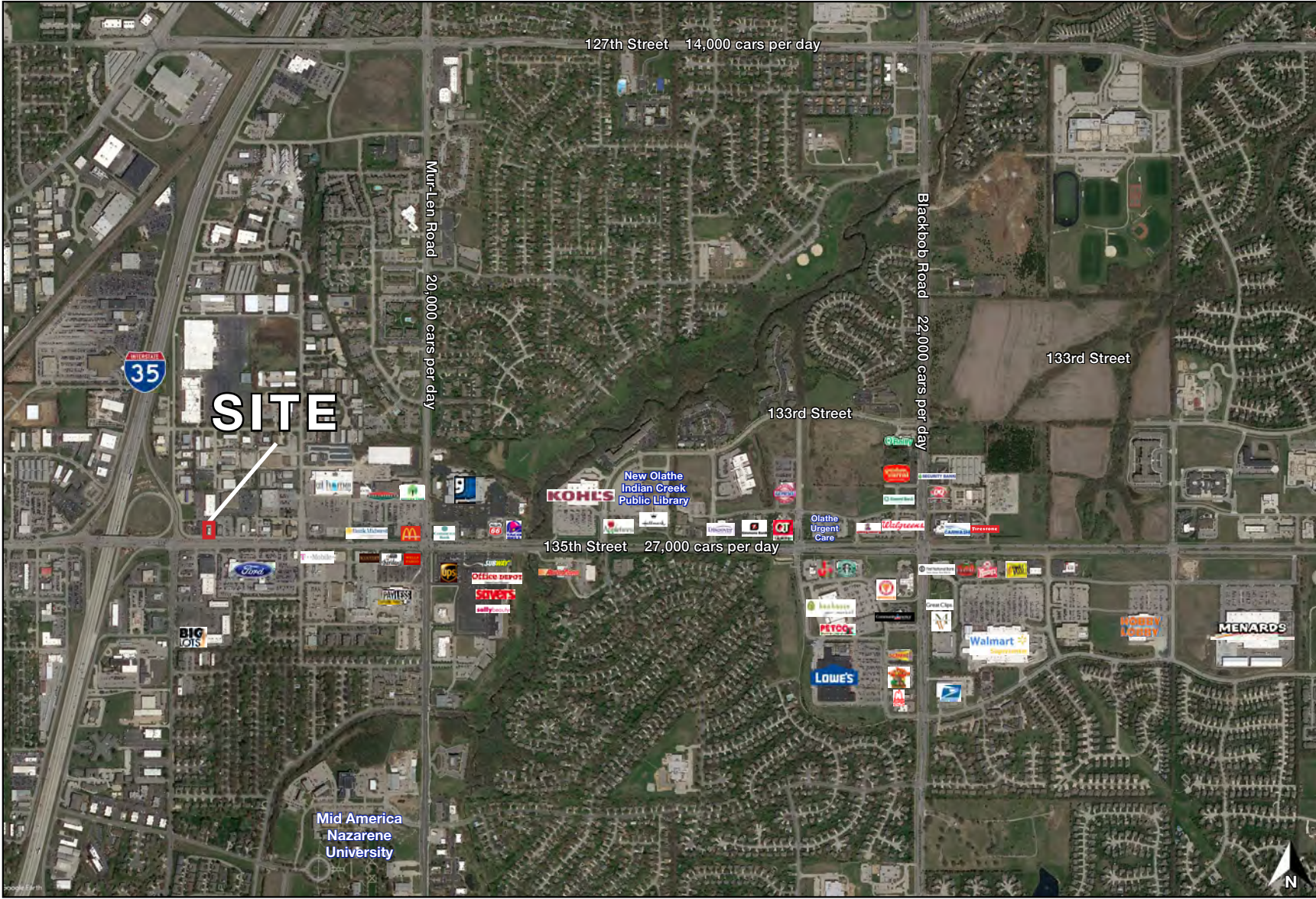




# Italian Restaurant Business With Drive-Thru

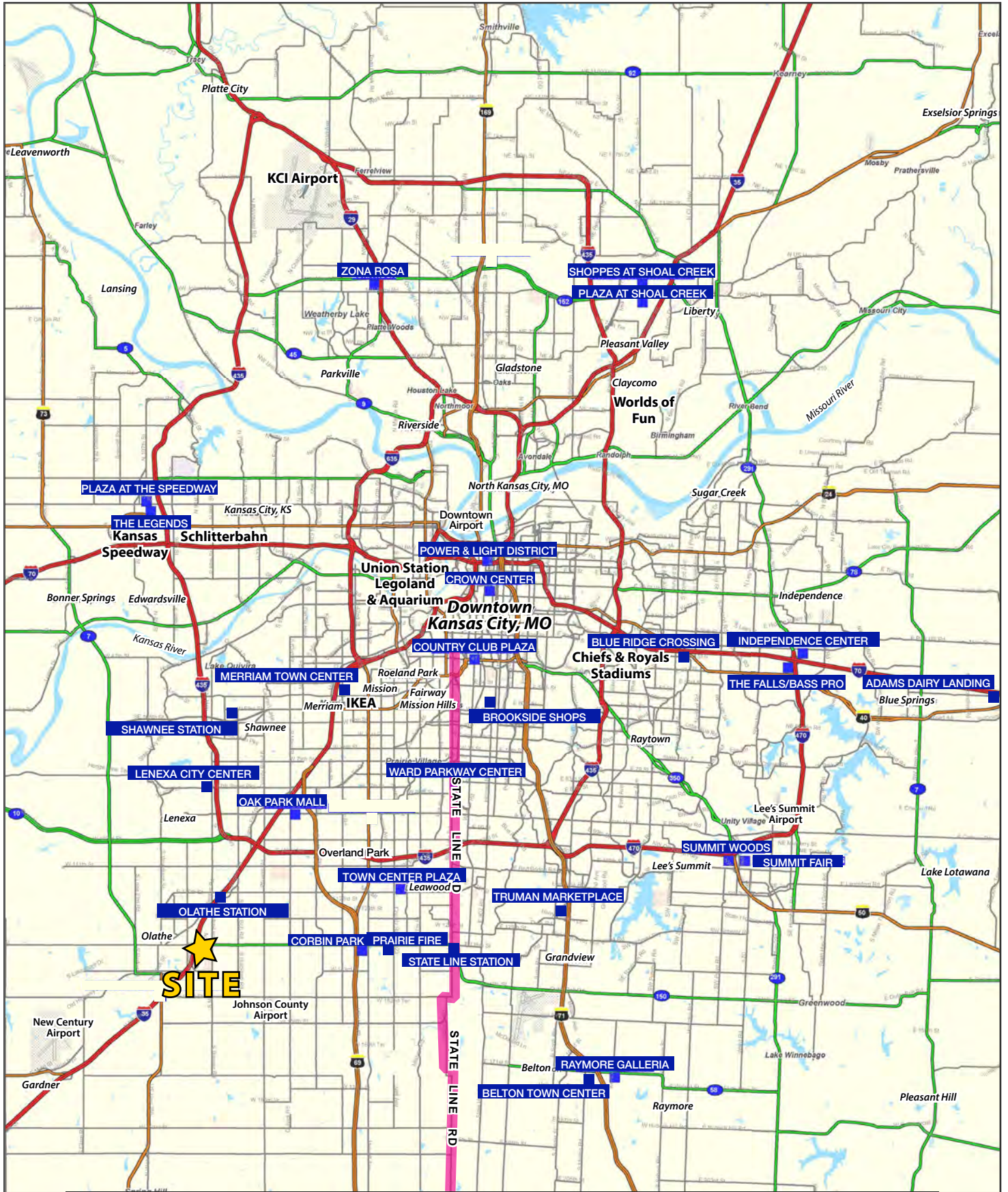
## I-35 at 1808 E. Santa Fe St, Olathe, Kansas

AERIAL



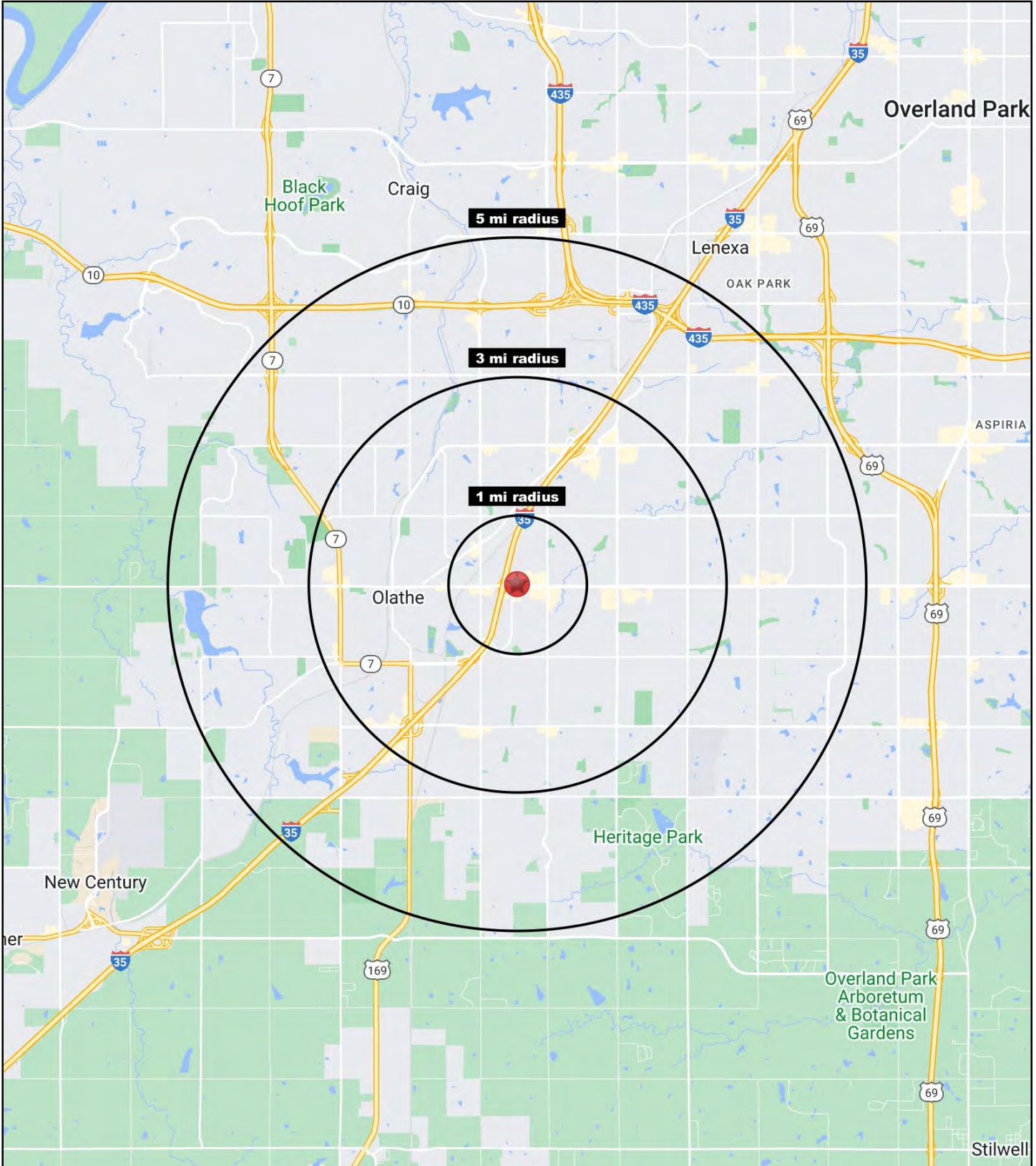


# Italian Restaurant Business With Drive-Thru I-35 at 1808 E. Santa Fe St, Olathe, Kansas



# Italian Restaurant Business With Drive-Thru

## I-35 at 1808 E. Santa Fe St, Olathe, Kansas





# Italian Restaurant Business With Drive-Thru I-35 at 1808 E. Santa Fe St, Olathe, Kansas

1808 E. Santa Fe Street Olathe, KS 66062	1 mi radius	3 mi radius	5 mi radius
<b>Population</b>			
2022 Estimated Population	11,131	104,997	187,460
2027 Projected Population	11,391	107,372	195,464
2020 Census Population	11,019	104,047	185,663
2010 Census Population	11,377	98,774	164,011
Projected Annual Growth 2022 to 2027	0.5%	0.5%	0.9%
Historical Annual Growth 2010 to 2022	-0.2%	0.5%	1.2%
2022 Median Age	31.0	33.5	35.2
<b>Households</b>			
2022 Estimated Households	4,317	38,022	68,641
2027 Projected Households	4,514	39,721	73,384
2020 Census Households	4,251	37,392	67,466
2010 Census Households	4,369	35,372	59,264
Projected Annual Growth 2022 to 2027	0.9%	0.9%	1.4%
Historical Annual Growth 2010 to 2022	-	0.6%	1.3%
<b>Race and Ethnicity</b>			
2022 Estimated White	64.6%	74.2%	77.4%
2022 Estimated Black or African American	9.0%	7.5%	6.2%
2022 Estimated Asian or Pacific Islander	7.1%	5.5%	6.1%
2022 Estimated American Indian or Native Alaskan	0.6%	0.4%	0.3%
2022 Estimated Other Races	18.7%	12.4%	9.9%
2022 Estimated Hispanic	20.4%	12.9%	9.9%
<b>Income</b>			
2022 Estimated Average Household Income	\$74,936	\$103,469	\$120,477
2022 Estimated Median Household Income	\$60,842	\$91,791	\$105,832
2022 Estimated Per Capita Income	\$29,444	\$37,590	\$44,209
<b>Education (Age 25+)</b>			
2022 Estimated Elementary (Grade Level 0 to 8)	3.4%	2.9%	1.9%
2022 Estimated Some High School (Grade Level 9 to 11)	5.5%	3.2%	2.4%
2022 Estimated High School Graduate	23.0%	17.1%	13.8%
2022 Estimated Some College	22.3%	19.5%	17.4%
2022 Estimated Associates Degree Only	8.8%	8.2%	7.7%
2022 Estimated Bachelors Degree Only	24.8%	31.9%	35.0%
2022 Estimated Graduate Degree	12.2%	17.3%	21.7%
<b>Business</b>			
2022 Estimated Total Businesses	679	3,054	5,991
2022 Estimated Total Employees	8,066	47,092	103,381
2022 Estimated Employee Population per Business	11.9	15.4	17.3
2022 Estimated Residential Population per Business	16.4	34.4	31.3

©2022, Sites USA, Chandler, Arizona, 480-491-1112 Demographic Source: Applied Geographic Solutions 11/2022, TIGER Geography - RS1